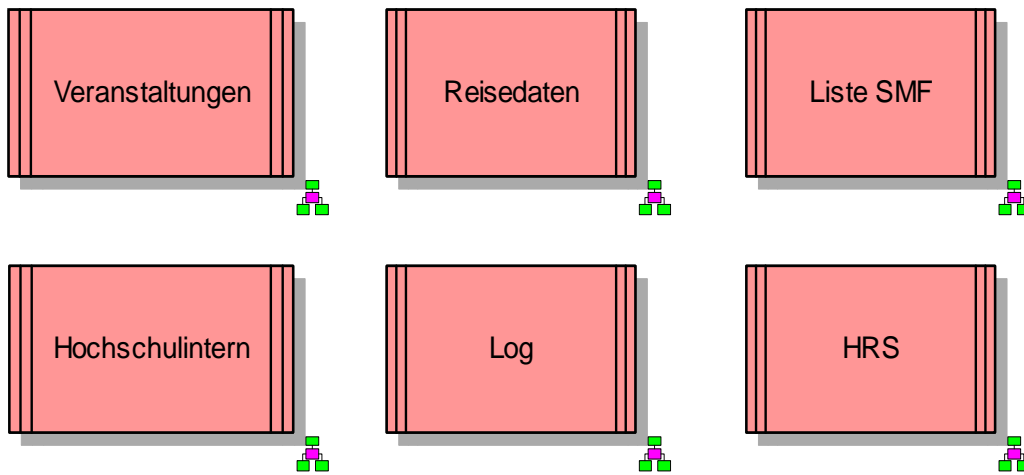
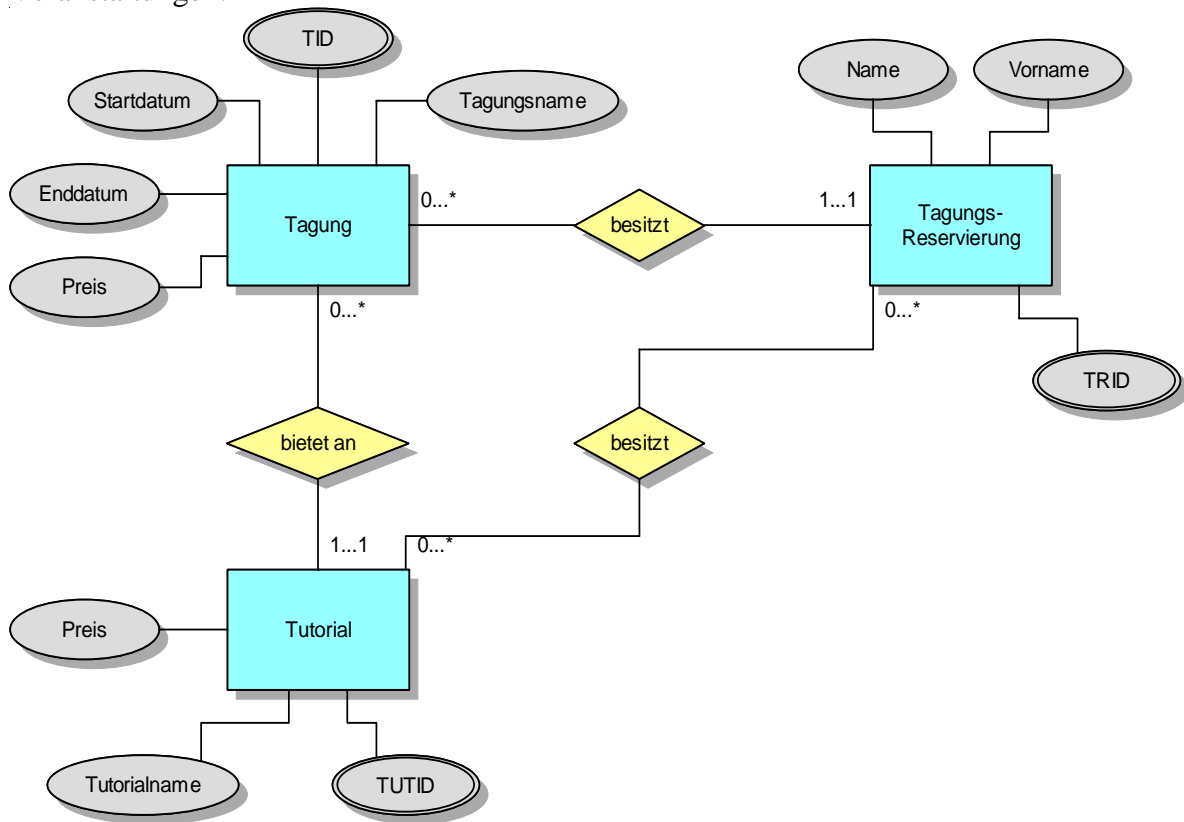


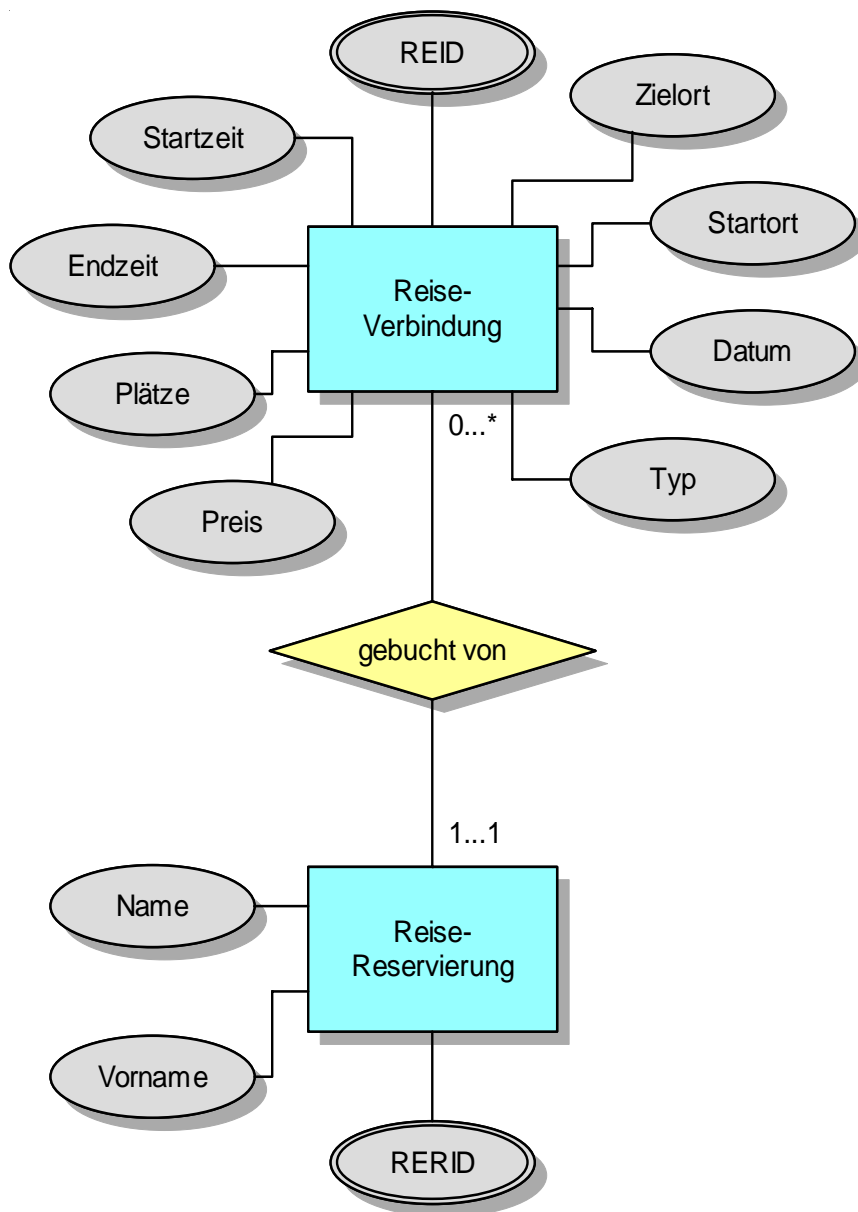
# Datenmodell (ERM):



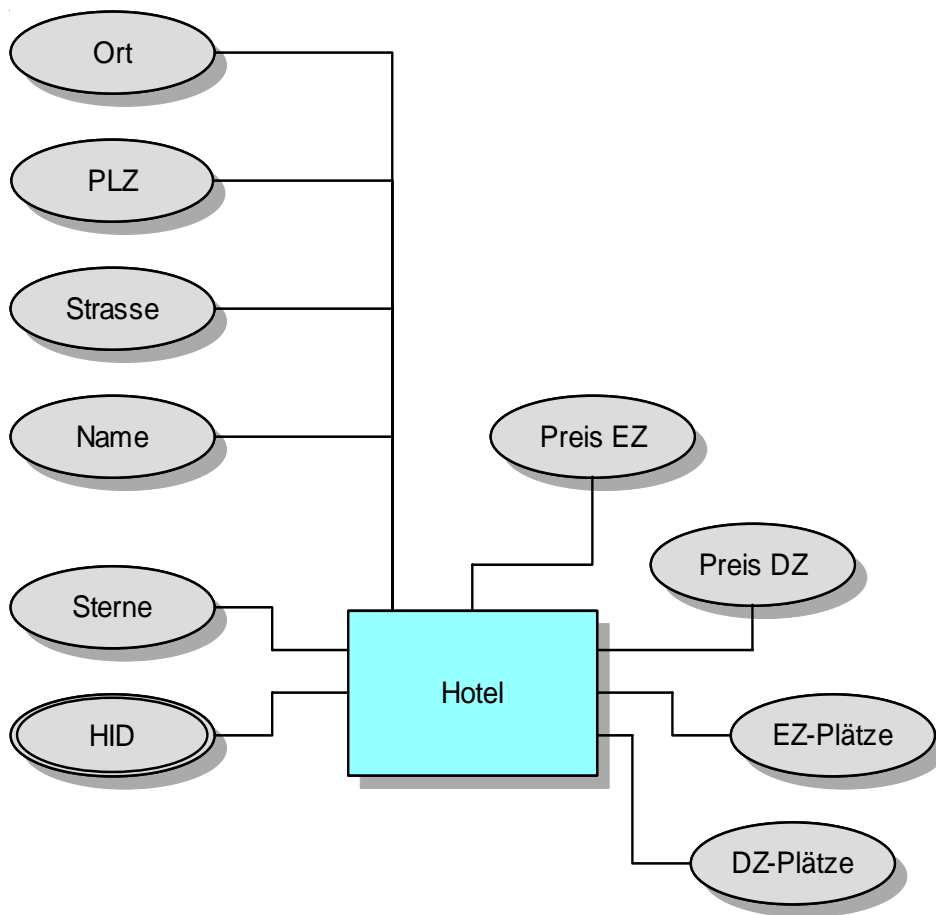
## Veranstaltungen:



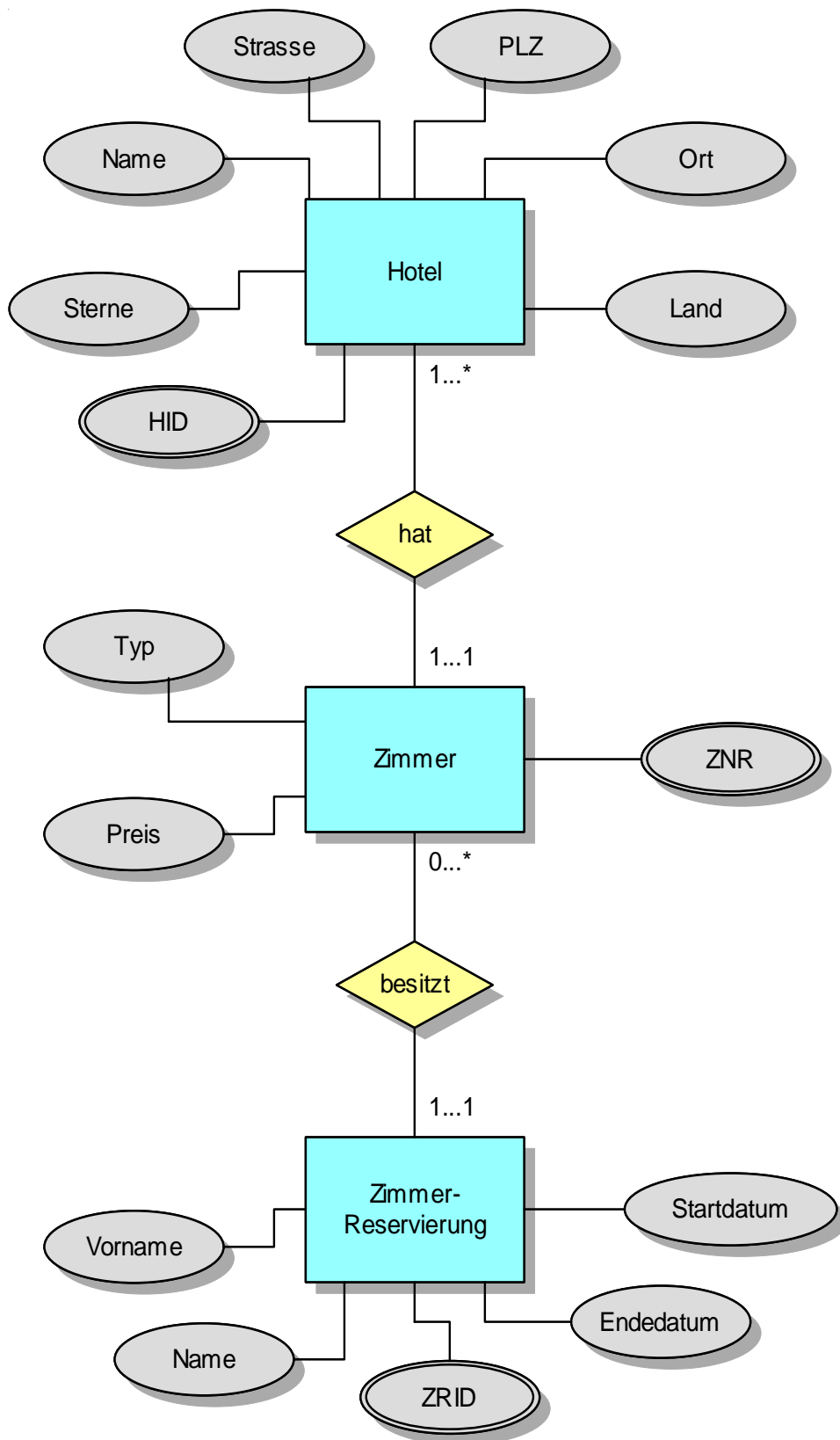
## Reisedaten:



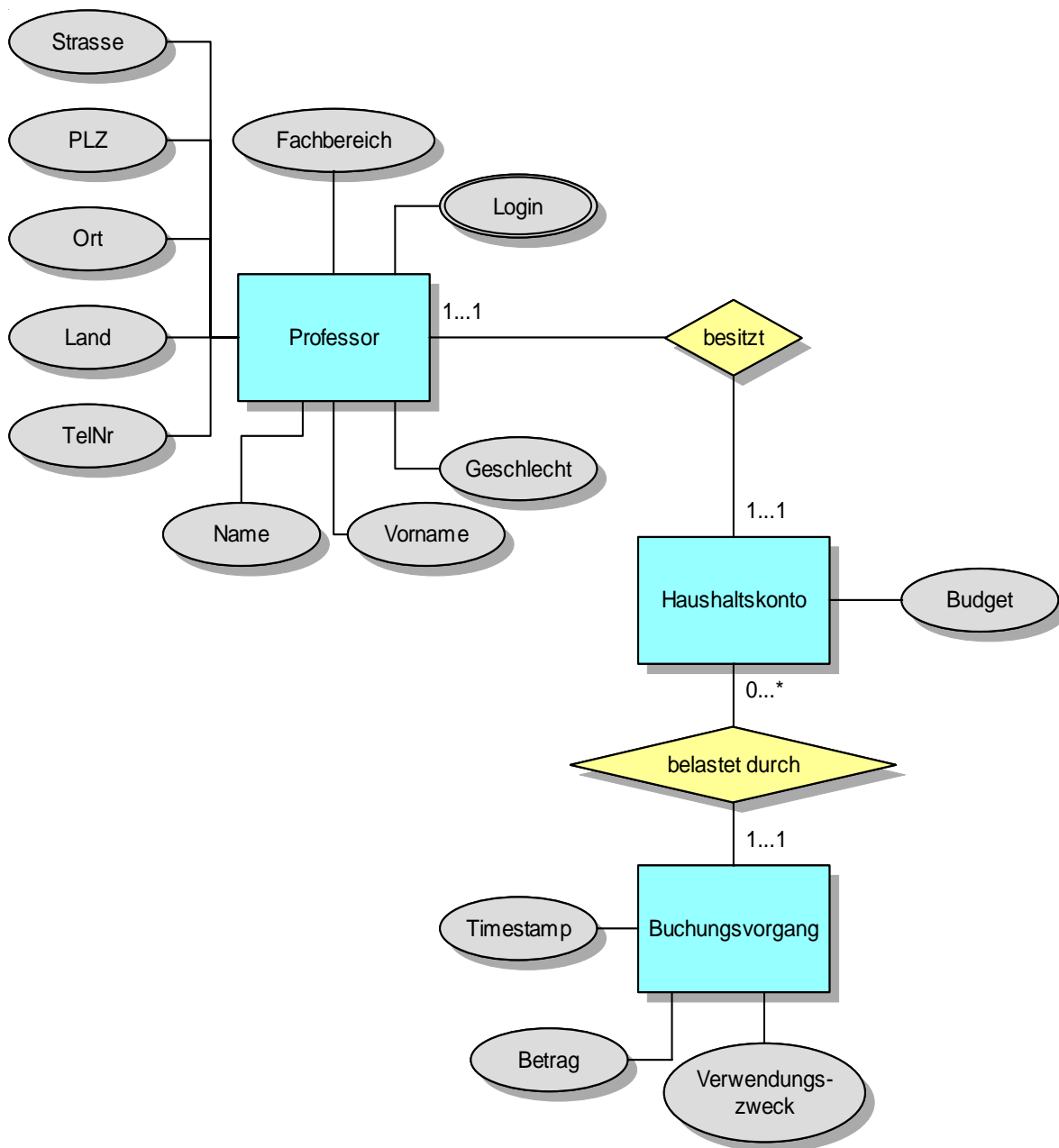
Liste SMF:



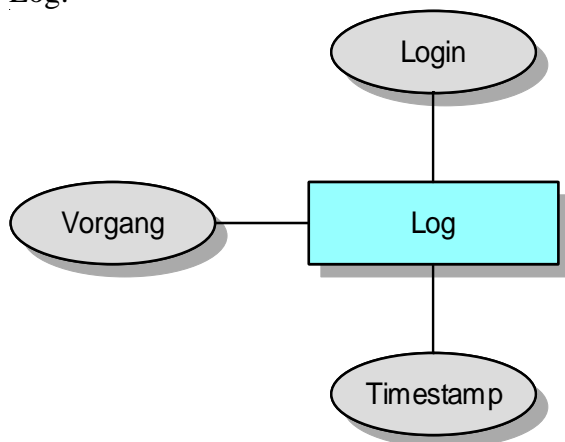
HRS:



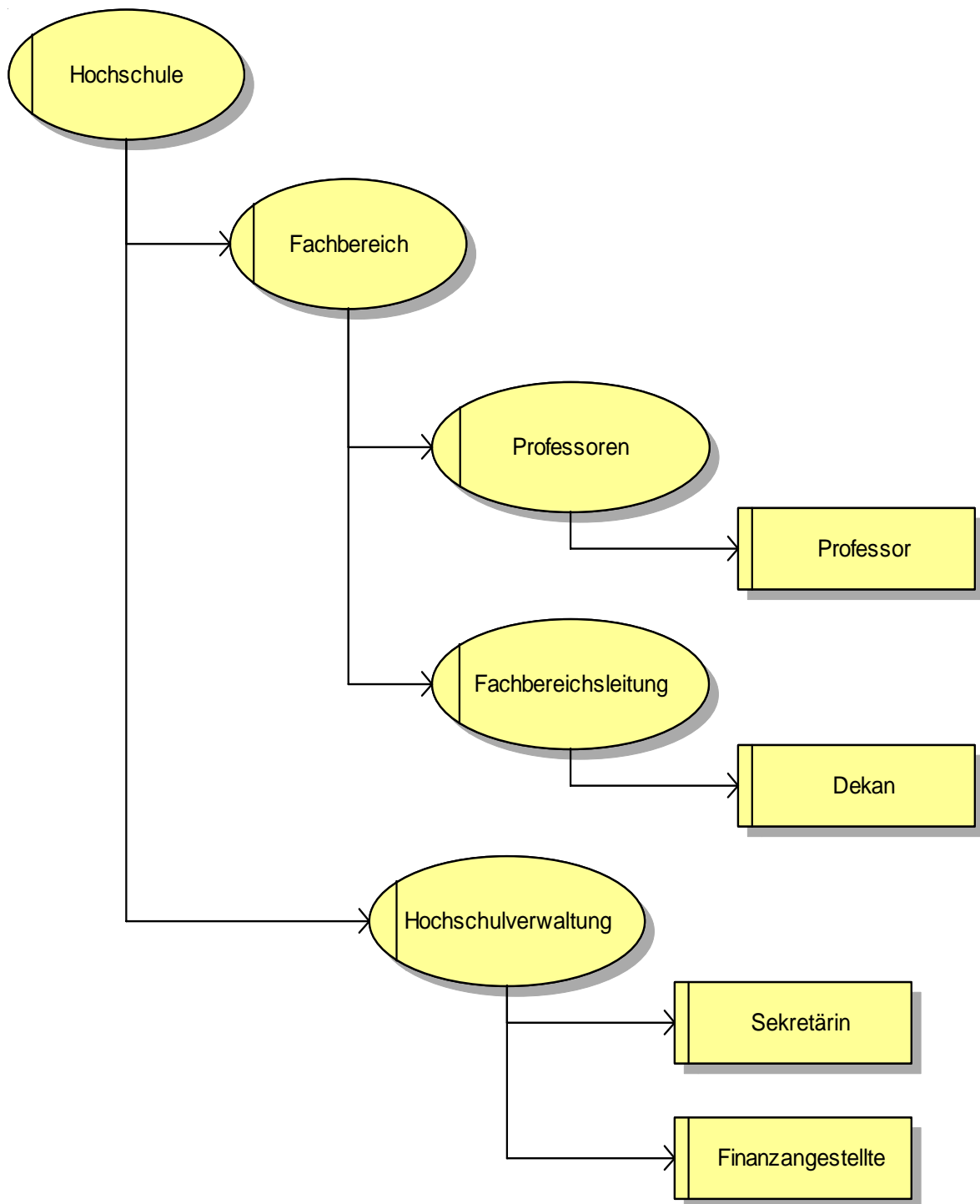
Hochschulintern:



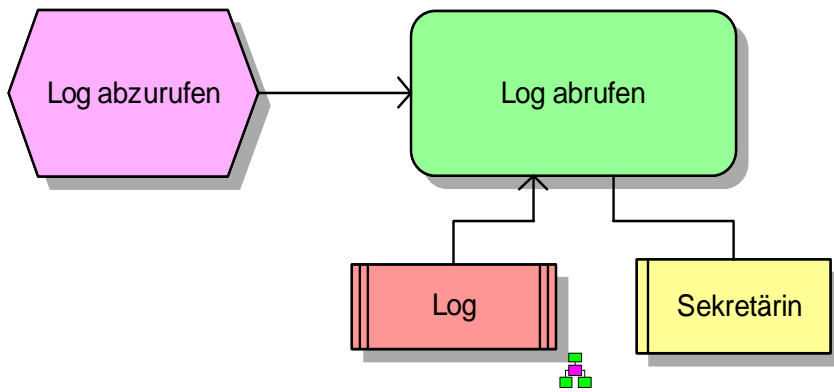
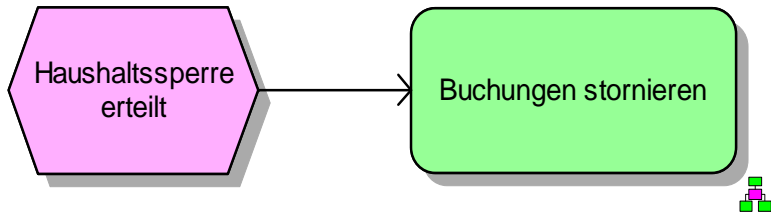
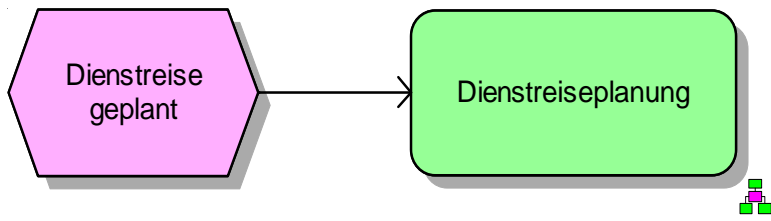
Log:



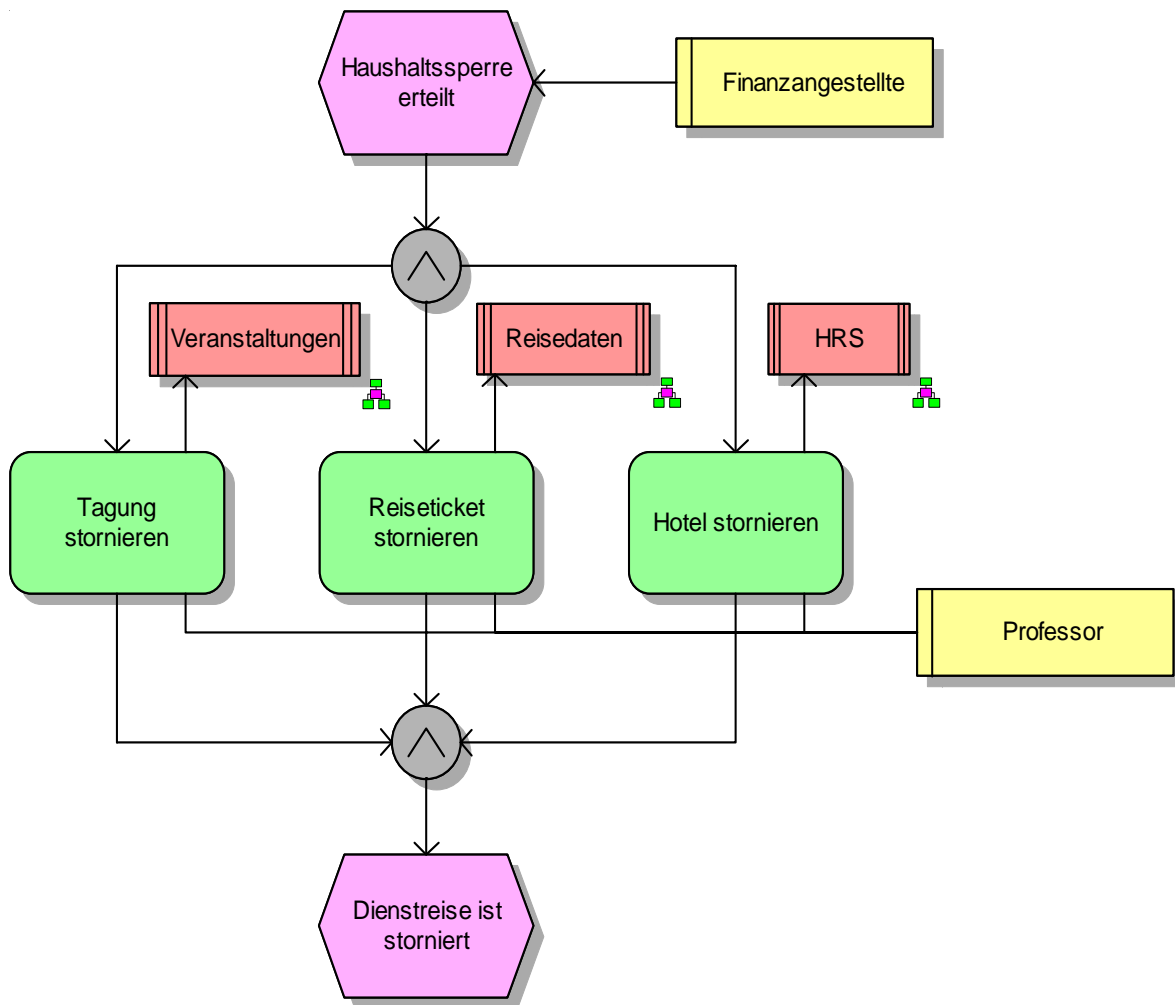
**Rollen (Organigramm):**



**Prozessmodell (EPK):**

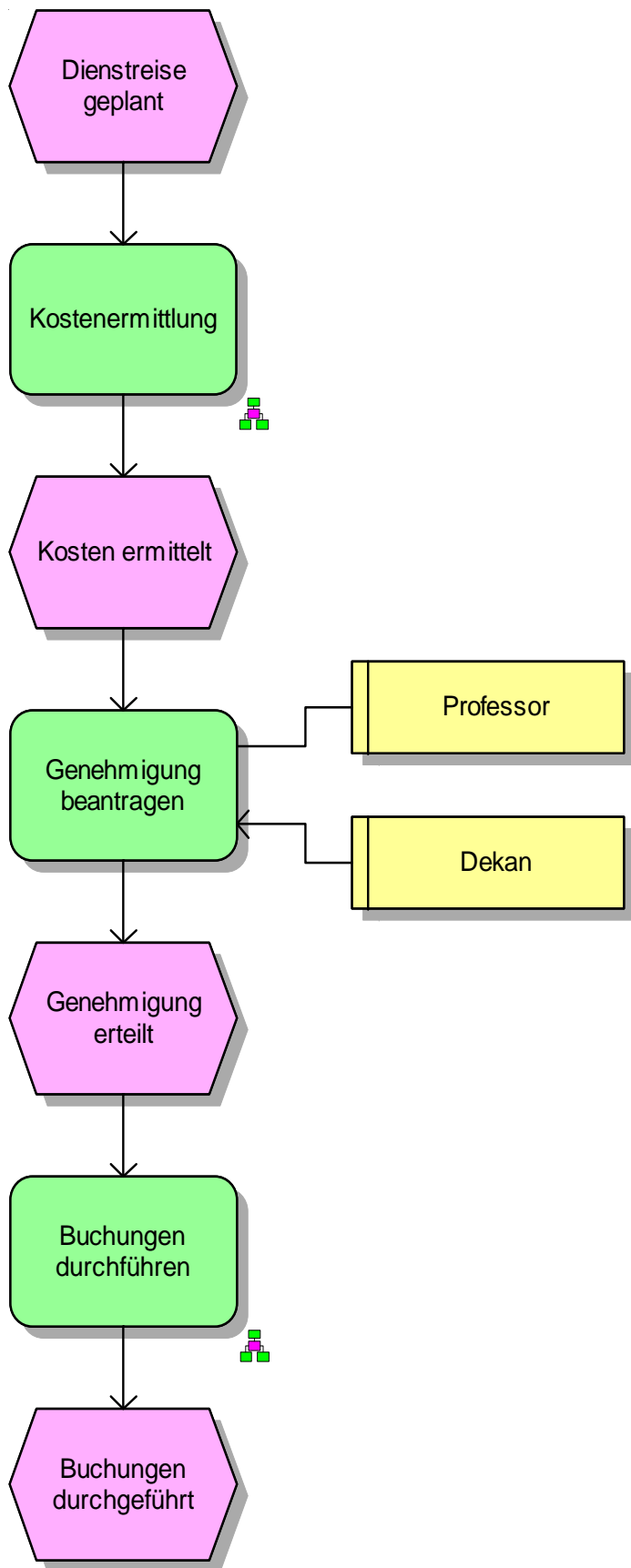


Buchungen stornieren:

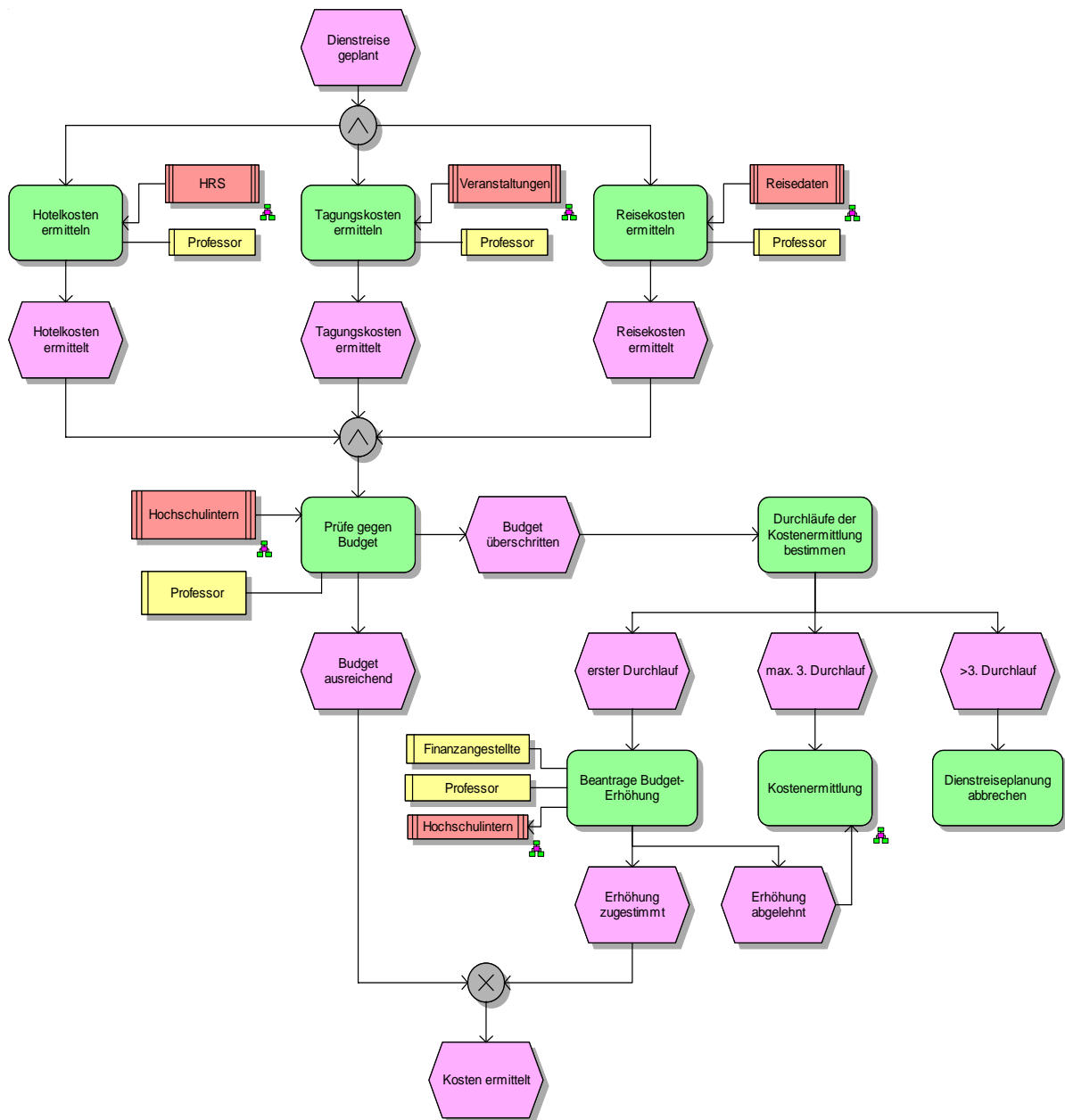


Dienstreiseplanung:

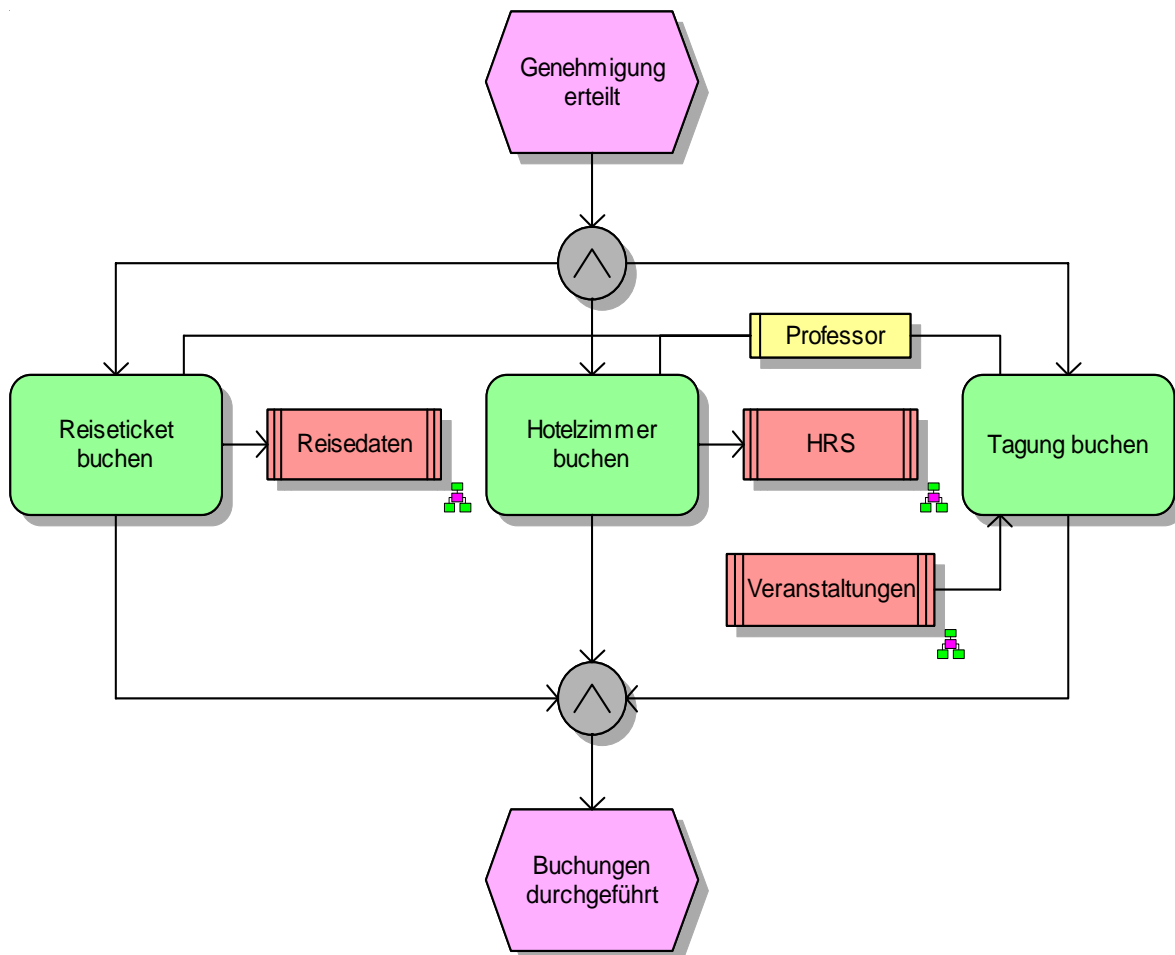




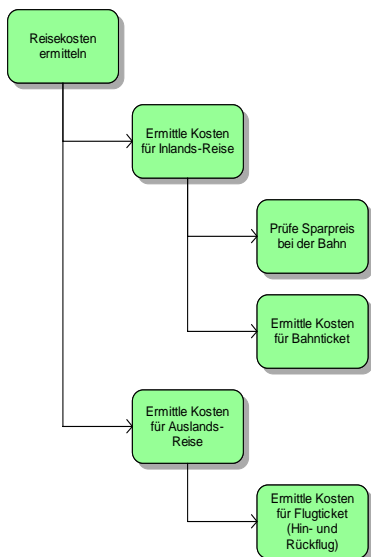
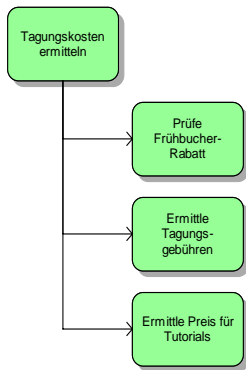
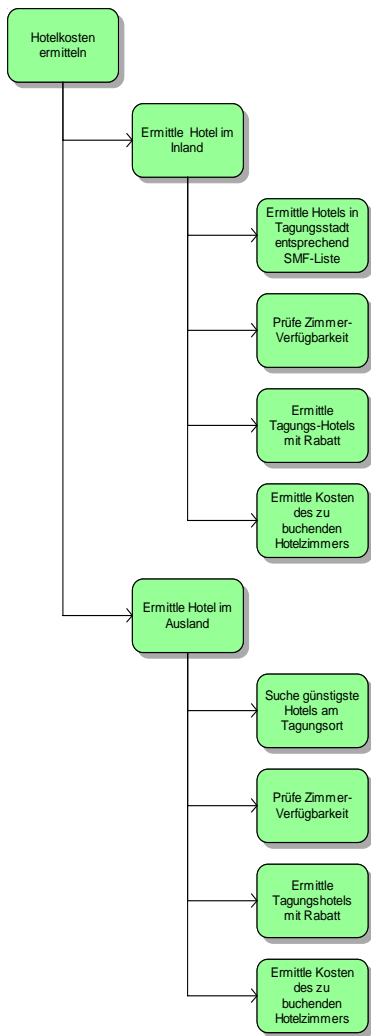
Kostenermittlung:

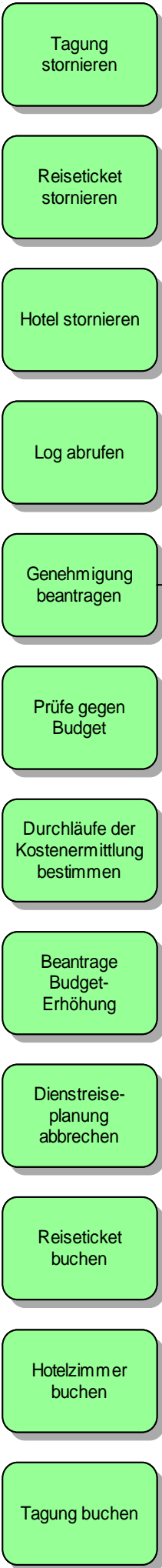


Buchungen durchführen:



**Funktionsbaum:**





Tagung stornieren

Reiseticket stornieren

Hotel stornieren

Log abrufen

Genehmigung beantragen

Prüfe, ob Abwesenheit vertretbar

Prüfe gegen Budget

Durchläufe der Kostenermittlung bestimmen

Beantrage Budget-Erhöhung

Dienstreise-planung abrechen

Reiseticket buchen

Hotelzimmer buchen

Tagung buchen